

Process for WHPA Input to CPUC and CEC

Summary

WHPA recommendations on process to provide input to California Public Utility Commission (CPUC) and California Energy Commission (CEC).

Finalized: April 29, 2015

Use of this Document

This document provides the process for WHPA input to CPUC and CEC.

It is based on an official [WHPA Work Product](#) of April 29, 2015, titled “California Energy Efficiency Strategic Plan Update & Existing Buildings Energy Efficiency Collaboration - Recording / Slides.” This Work Product was developed by the WHPA.

This document, and also the WHPA Work Product, may be used in part or whole at no charge. Attribution to the Western HVAC Performance Alliance is requested.

We would also ask that you inform the WHPA through info@performancealliance.org if you have made use of either document, so that we can inform and encourage the hundreds of volunteers who donate their time to providing expert HVAC advice in order to support energy efficiency objectives.

Process for WHPA Input to CPUC and CEC

Contents

Situation & Proposal	Step 1: Engage & Coordinate to Assign
Relationships & Role	Step 2: Facilitate Research & Discussion to Recommend
WHPA Facilitates Input by HVAC Experts & Stakeholders	Step 3: Review, Refine, and Transmit

◀ Situation & Proposal

Situation:

The CPUC and CEC seek stakeholder engagement developing their related policy documents. Both include significant HVAC elements:

- CPUC's revision to its California Energy Efficiency Strategic Plan (CEESP V2.0)
- CEC's Existing Buildings Energy Efficiency Action Plan.

WHPA Proposition:

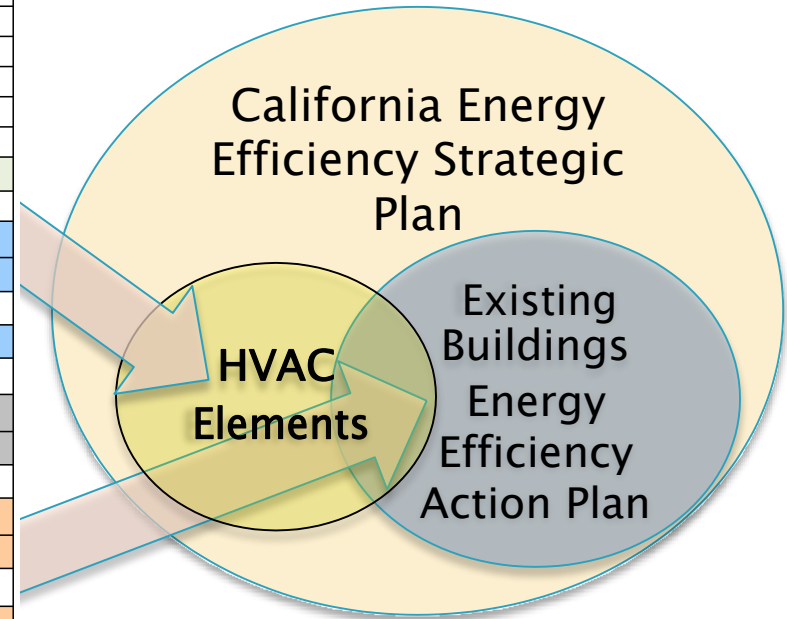
The documents are interrelated, so coordinated stakeholder processes facilitated by the WHPA would be an efficient manner to access the HVAC expertise of WHPA's members to offer information and recommendations.



Relationships & Roles

...As conceived, the WHPA Council of Advisors (COA) will oversee HVAC stakeholder input to the CEESP w/ regard to the New Buildings, Local Governments and possibly Industry.

Proposed Sectors & Topics Framework		
Major Sectors	Sub-Sectors	Topic Areas
New Buildings		
Residential		
		HVAC Codes & Compliance
		HVAC in Whole Building
		HVAC QI - Standards-Based Install (SBI)
		HVAC Automation & Controls
		HVAC Workforce Education & Training
		Etc..., Topics as appropriate to context
Non-Residential		
		Similar to above - Topics as appropriate to context
Local Governments		
As Models		
		Topics as appropriate to context
As Regulators		
		Topics as appropriate to context
Industrial HVAC		
Support If/As Requested		
		Topics as appropriate to context
Existing Buildings		
Residential		
		If/As Decided by Existing Buildings Action Plan Committee
Non-Residential		
		If/As Decided by Existing Buildings Action Plan Committee



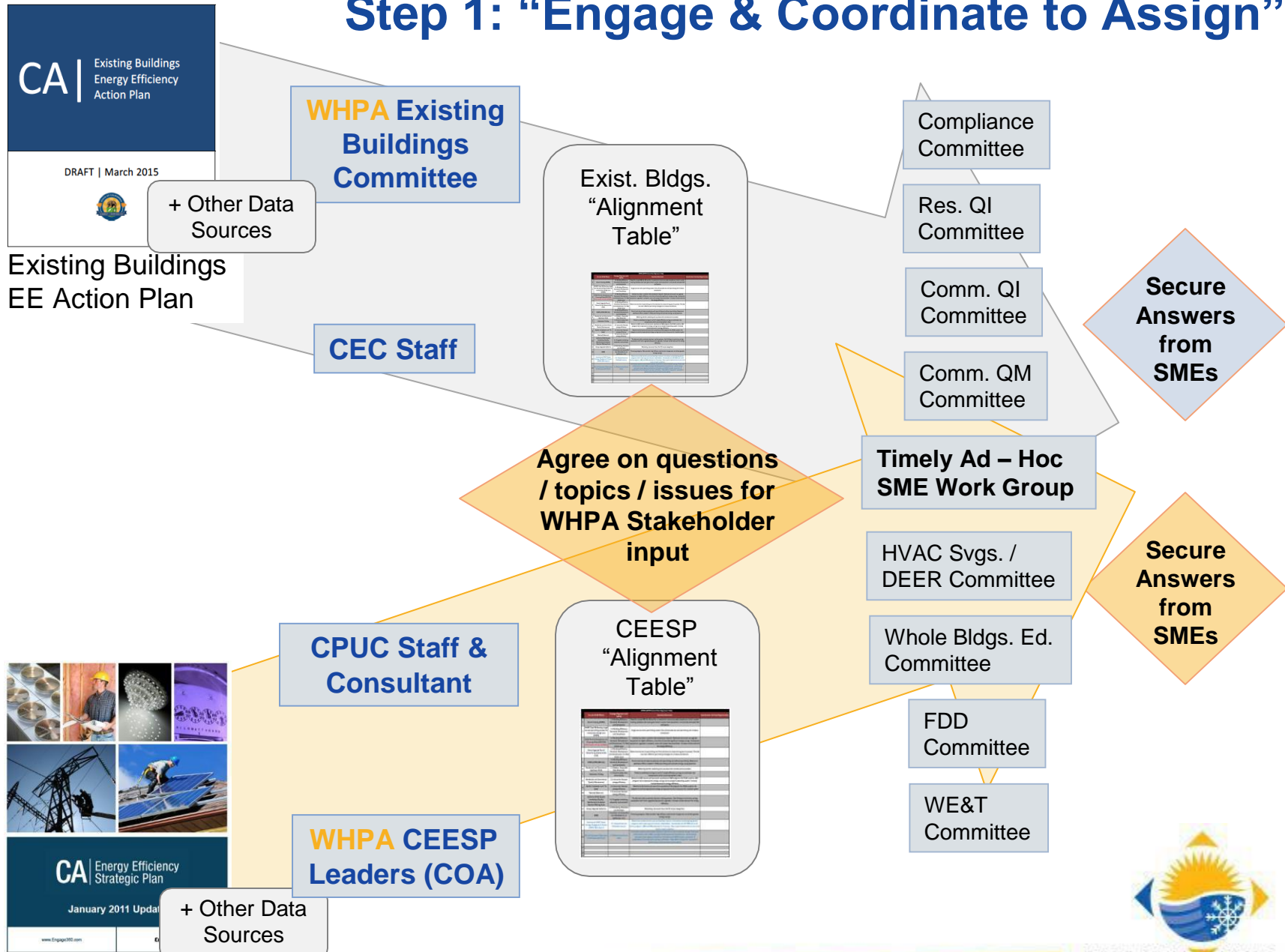
...The Existing Buildings Energy Efficiency Action Plan will be used as the existing buildings section of the CEESP V2.0. Another WHPA committee (EBEEAP) will provide stakeholder input to that document.

WHPA Facilitates input by HVAC Experts and Stakeholders

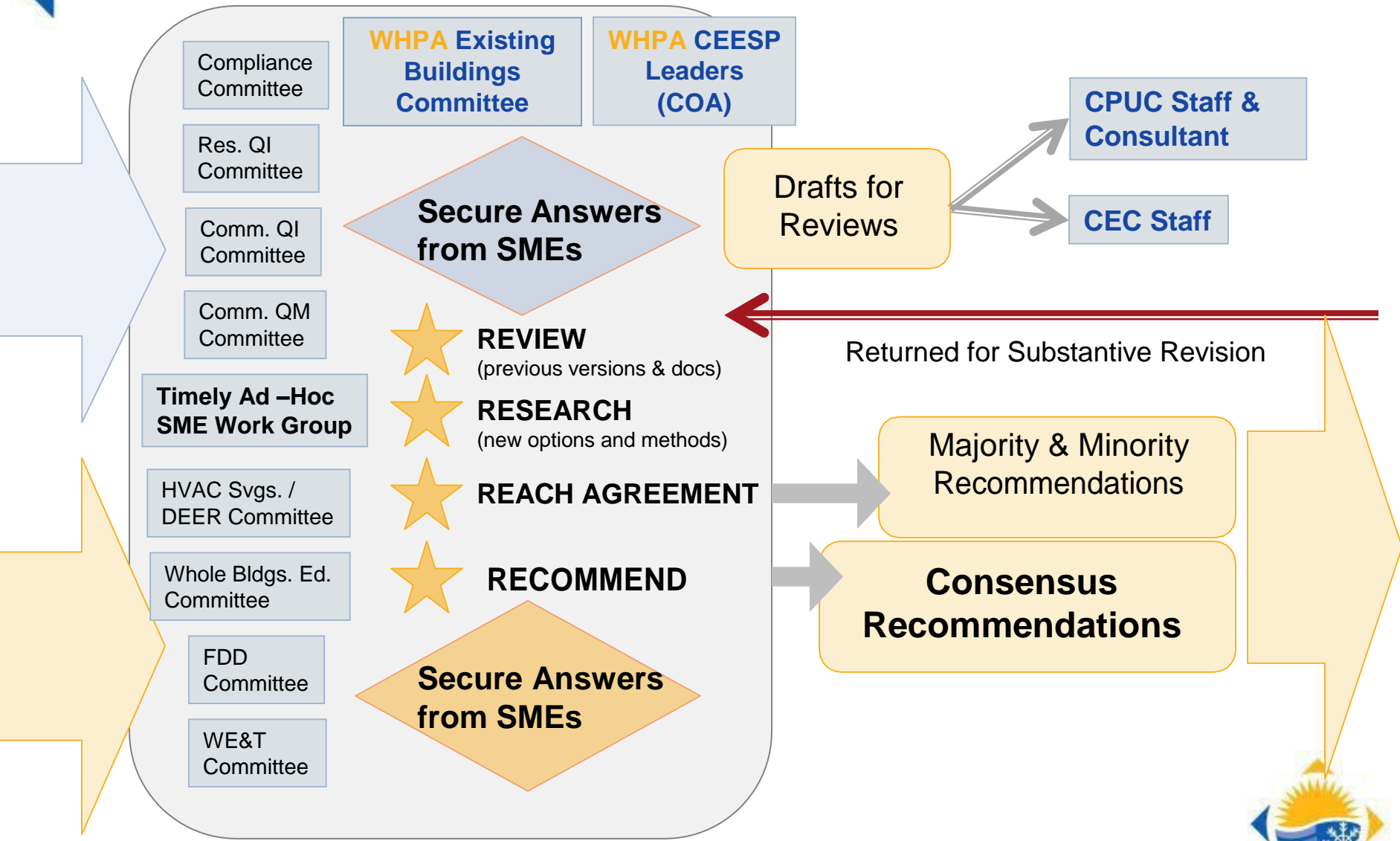
The general approach proposed:

1. WHPA consults with CEC and CPUC staff and consultants to identify topics and issues where WHPA HVAC expertise and/or stakeholder input is needed, using “Alignment Tables” as communication.
2. WHPA assigns these topics to appropriate Subject Matter Experts, Working Groups, or Committees as appropriate.
3. Subject matter experts research, discuss, and prepare recommended responses in a timely manner.
4. WHPA collects responses from SMEs, working groups, or committees. Drafts shared with CEC & CPUC as appropriate.
5. WHPA vets, polishes and qualifies responses to CEC and CPUC for inclusion in their documents.
6. WHPA assembles all final input, review by WHPA Executive Committee, CEC and CPUC staff for final review, and transmits to document authors.

Step 1: "Engage & Coordinate to Assign"



Step 2: “Facilitate Research & Discussion to Recommend”



Step 3: "Review, Refine & Transmit"

